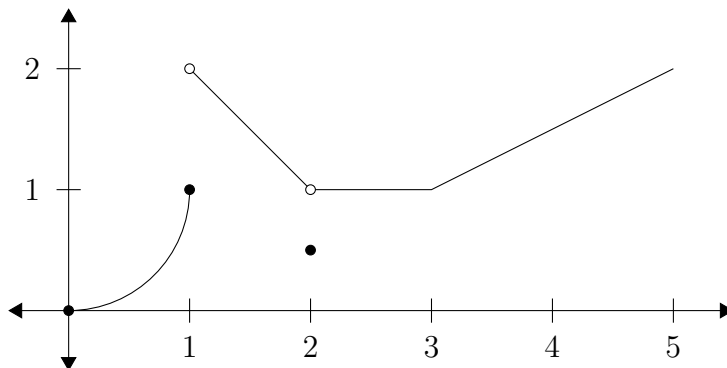


3. The height in feet of a ball thrown into the air at time t is given by $y = 20t - 16t^2$. Find the average velocity for the time period beginning when $t = 2$ and lasting 1 second.

4. This is the graph of $y = f(x)$ on the domain $0 \leq x \leq 5$.



Find the following limits. If a limit does not exist, write “DNE.” You do not have to show work.

- (a) $\lim_{x \rightarrow 1^+} f(x)$
- (b) $\lim_{x \rightarrow 1^-} f(x)$
- (c) $\lim_{x \rightarrow 1} f(x)$
- (d) $f(2)$
- (e) $\lim_{x \rightarrow 2} f(x)$